

How To Use a NALOXONE Overdose Prevention Rescue KIT

What is an OVERDOSE PREVENTION RESCUE KIT & a how to?



"Drug overdose deaths in the United States have increased fivefold since 1990, claiming the lives of 27,658 Americans in 2007"

WHAT'S IN A NALOXONE OVERDOSE PREVENTION RESCUE KIT?

How the kit is assembled isn't nearly as important as whether or not it contains all the necessary ingredients. These kits require a wide range of medical tools such as:

- ✓ Injectable naloxone or intranasal naloxone
- ✓ Alcohol pads
- ✓ Rubber gloves
- ✓ Rescue breathing masks
- ✓ Written materials containing information on overdose prevention, recognizing overdose, responding to overdoses, how to put the intranasal naloxone together and aftercare information including information on obtaining naloxone refills



WHAT DRUGS DOES NALOXONE COUNTERACT?



Oxycontin
Vicodin
Codeine
Fentanyl
Morphine
Heroin
Methadone

* NALOXONE REMAINS IN THE SYSTEM FOR A SHORT AMOUNT OF TIME. MANY OPIATES WILL REMAIN IN THE SYSTEM FOR MUCH LONGER THAN THE NALOXONE.

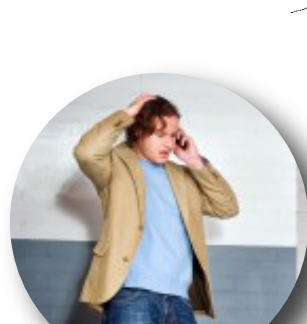
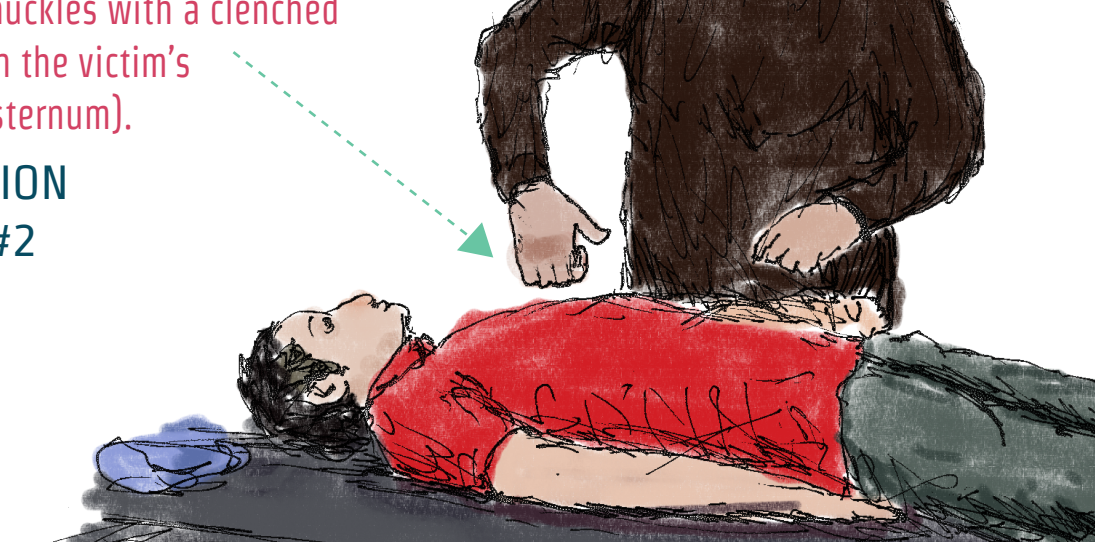
HOW TO ADMINISTER NALOXONE

#1 START WITH A STERNAL RUB

Which is a test for responsiveness by grinding your knuckles with a clenched fist up and down the victim's breastbone (or sternum).

IF NO REACTION

Go To Step #2



#2 CALL 911 FOR RESCUE ASSISTANCE

#3 GIVE RESCUE BREATHING

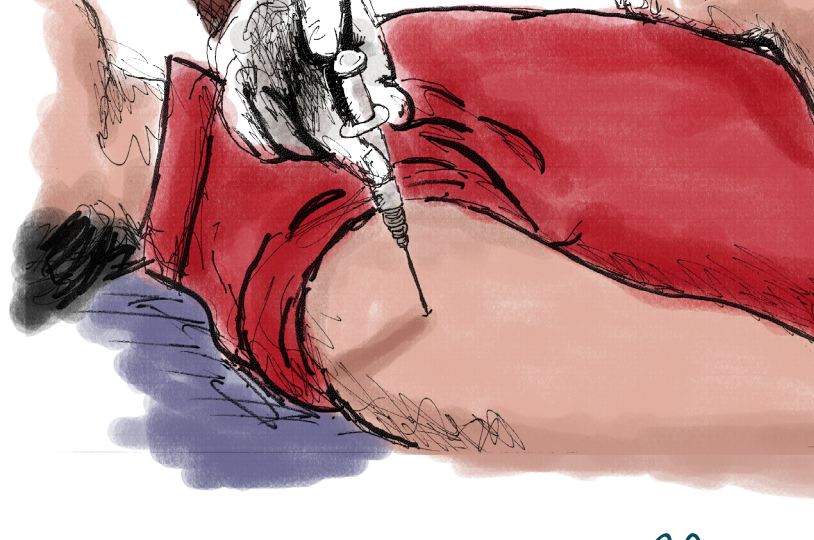
- Clear throat of any obstructions
- Lift neck to open airway
- Put mask on
- Put hand on forehead
- Pinch the nose
- Breathe twice hard and quickly
- Wait 5 seconds and give another breath
- Count to 5 and give one breath
- Continue to count to five and give one breath



#4 ADMINISTER NALOXONE

syringe

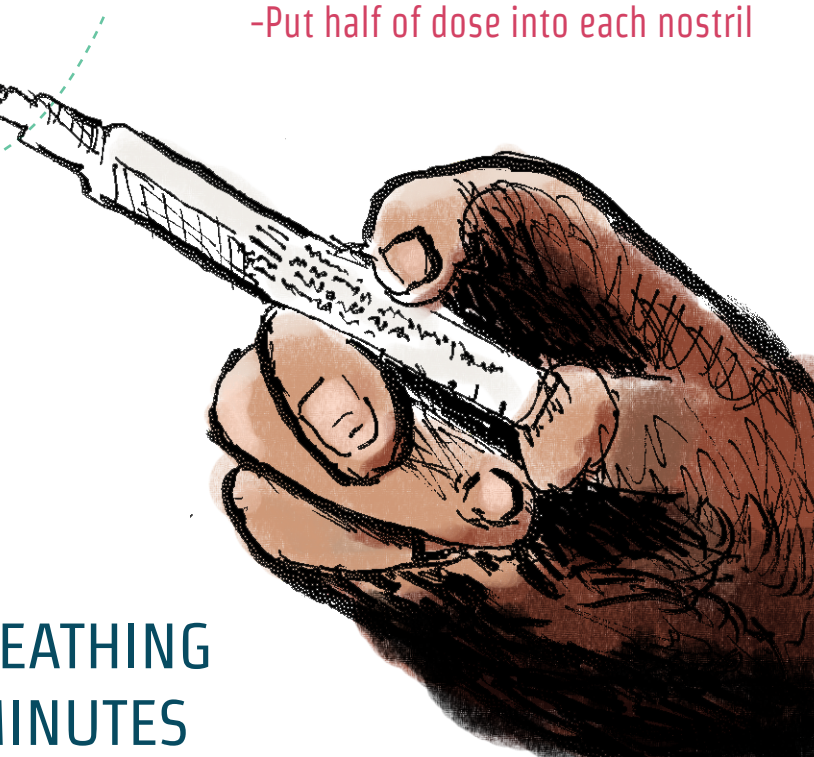
- Put gloves on
- Uncap syringe
- Uncap Naloxone vial
- Pull entire content into syringe
- Inject syringe into sholder in a jabbing motion



OR

spray

- Take yellow caps off
- Take cap off of Naloxone
- Put nose piece on
- Insert Naloxone into tube until you get resistance
- Put half of dose into each nostril



#5 CONTINUE RESCUE BREATHING FOR THREE TO FIVE MINUTES

- If this doesn't work, give second dose of Naloxone (start at step #4)

#6 STAY WITH THE PERSON UNTIL HELP ARRIVES

WHAT HAPPENS AFTER NALOXONE IS WORKING?

Naloxone only lasts 30-90 minutes

The Person may feel sick from withdrawal

► DON'T ALLOW THEM TO USE DRUGS

IS NALOXONE DANGEROUS?

Naloxone doesn't have any negative side effects



RehabCenter.net